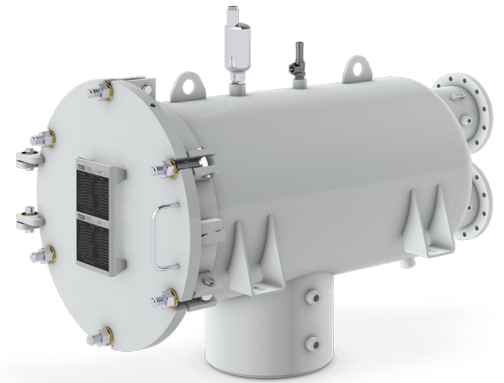


Qualified to specification EI 1581 6th Edition, Category C, Type S-M

The standardized filter/water separator FW24-H-T is designed to be compliant with procedural guidelines and requirements of the pressure vessel regulation AD 2000.

The filter vessels incorporate threaded base coalescer elements and reusable separator elements.



### Application Area

- Designed for hydrant dispensers and refuelers

### Technical Data

- |                            |                                   |
|----------------------------|-----------------------------------|
| • Design and construction: | EI 1596 3rd Edition               |
| • Design pressure:         | Designed according to EN 12312-05 |
| • Flow rate:               | Up to 4180 lpm (1104 USgpm)       |

### Standard Design

- |                        |                             |
|------------------------|-----------------------------|
| • Material:            | Stainless steel             |
| • Interior:            | Stainless steel             |
| • Cover seal:          | NBR (Buna-N) or FKM (Viton) |
| • Anti-vibration grid: | According to EI 1596        |

### Recommended Accessories

- Differential pressure gauge
- Manual drain valve
- Automatic air eliminator
- Pressure relief valve
- Sampling probe connections
- Automatic sump drainage
- Electronic sensors

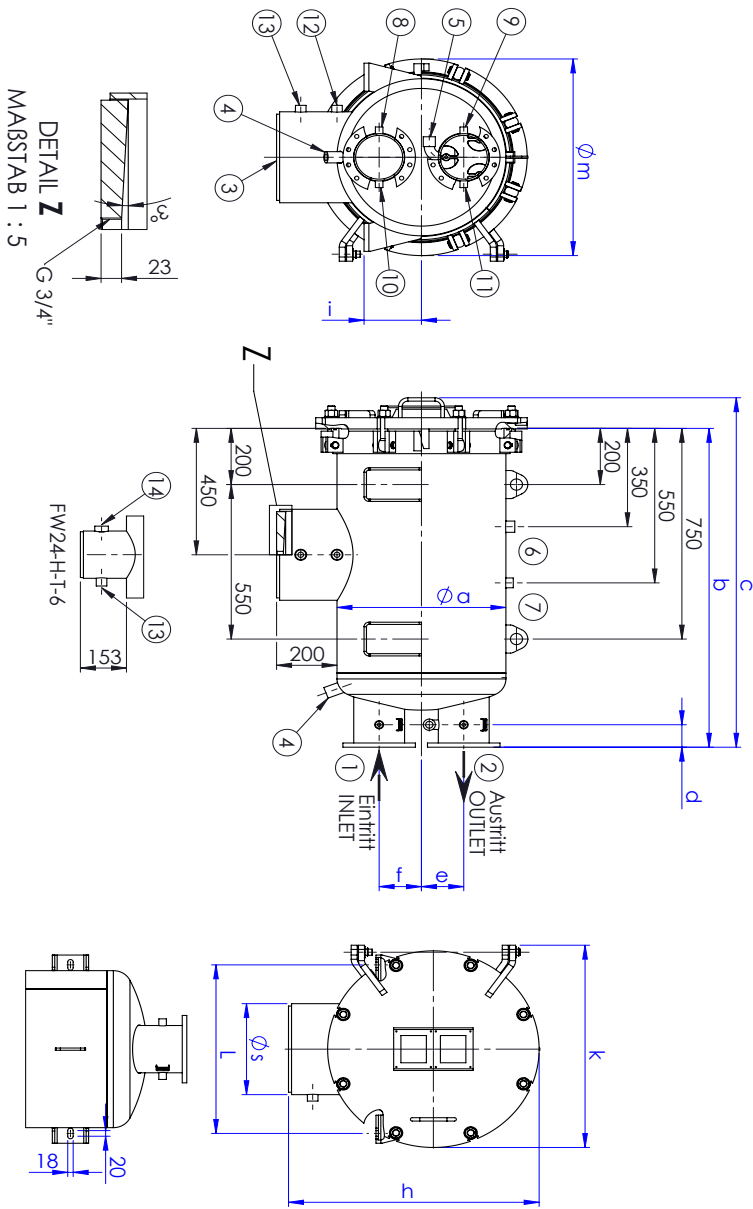
---

Order Reference

---

Vessel	Coalescer Elements		Separator Elements		Flow Rates	
Model No.	Model	Quantity	Model	Quantity	lpm	USgpm
FW24-H-T-6-770-10	P2.1-770-6	6	60.4C4-754-DV	1	660	174
FW24-H-T-12-770-10	P2.1-770-6	12	60.4C4-754-DV	2	1320	348
FW24-H-T-19-770-10	P2.1-770-6	19	60.4C4-754-DV	3	2090	552
FW24-H-T-25-770-10	P2.1-770-6	25	60.4C4-754-DV	4	2750	726
FW24-H-T-31-770-10	P2.1-770-6	31	60.4C4-754-DV	5	3410	900
FW24-H-T-38-770-10	P2.1-770-6	38	60.4C4-754-DV	6	4180	1104

FW24-H-T-Baureihe



FW24-H-T- Baureihe - PN10

Modell	Art.Nr.	Separator Model	Coalescer Model	Max. Q. [l/min]	Volume [dm <sup>3</sup> ]	Weight [kg]	Inlet / Outlet DIN 28661	Øa [mm]	b [mm]	c [mm]	d [mm]	e [mm]	f [mm]	h [mm]	i [mm]	k [mm]	L [mm]	Øs [mm]	Øm [mm]
FW24-H-T-6-770-10	3014077	60.4C4-754-DV	P 2.1-770-6	660	55	71	DN 50 TW	273	1067	1150	80	80	80	498	147	441	300	168.3	410
FW24-H-T-12-770-10	3013622	60.4C4-754-DV	P 2.1-770-6	1320	97	150	DN 80 TW	356	1092	1190	80	90	90	628	140	560	400	273	500
FW24-H-T-19-770-10	3013621	60.4C4-754-DV	P 2.1-770-6	2090	160	227	DN100 TW	457	1112	1215	75	110	100	728	160	665	500	323.9	600
FW24-H-T-25-770-10	3013620	60.4C4-754-DV	P 2.1-770-6	2750	200	266	DN150 TW	508	1145	1248	80	125	125	781	170	710	550	323.9	650
FW24-H-T-31-770-10	3013619	60.4C4-754-DV	P 2.1-770-6	3410	240	317	DN150 TW	559	1135	1244	80	140	140	832	190	720	600	323.9	700
FW24-H-T-38-770-10	3013618	60.4C4-754-DV	P 2.1-770-6	4190	288	340	DN150 TW	610	1150	1259	80	165	165	883	190	775	650	323.9	750

LIST OF NOZZLES

Stützen Nr./No. NO	Nennweite NOMINAL SIZE	Florenchenrol TYPE OF FLANGES	Benennung NAME
1	genm. Topbohle ACC. TABLE	genm. Topbohle ACC. TABLE	Eintritt INLET
2	genm. Topbohle ACC. TABLE	genm. Topbohle ACC. TABLE	Austritt OUTLET
3	G 3/4"	Gewinde / THREAD	Entleerung DRAIN
4/5 (0)	G 3/4"	Muffe / SOCKET	Restentleerung RESIDUAL DRAIN
6	G 3/4"	Muffe / SOCKET	Auto. Entleerung AUTO. DRAINAGE
7	G 1/2"	Muffe / SOCKET	Überdruck PRESSURE RELIEF
8/9	G 1/4"	Muffe / SOCKET	Diff. Druck Messung DIFF. PRESSURE GAUGE
10/11	G 1/4"	Muffe / SOCKET	Prozentrindome SAMPLE PROBE
12/13	G 1/2"	Muffe / SOCKET	Wasserstandspegel WATER LEVEL GAUGE
14	G 1"	Muffe / Socket	Schrauber / SIGHT GLASS

(1) FW24-H-T-6-770-10; G 1/2"  
- Ausbohrunge der Elemente ca. 0,8 Meter!  
- ELEMENT DISASSEMBLY LENGTH CA. 0,8 METER!  
- GEHTNUTZIGE MESSBOREICHUNGEN VORBEHALTEN!  
- SIGHT DEVIATIONS RESERVE!

Abkürzung/ SHORTCUTS	Bedeutung / MEANING
Øm	Außenmesser / OUTSIDE DIAMETER VESSEL
b	Außen Durchmesser - Axialer DISTANCE LID TO OUTLET
c	Ballenlänge / LENGTH OVERALL
d	Außen Messer - Axialer DISTANCE SOCKET TO OUTLET
e	Außen Bauteilbreite - Axialer DISTANCE CENTER TO OUTLET
f	Außen Bauteilbreite - Eintritt DISTANCE CENTER TO INLET
h	Gesamthöhe / HEIGHT OVERALL
i	Außen Bauteilbreite - Fall DISTANCE FOOT TO CENTER OF VESSEL
k	Ballenbreite / WIDTH OF VESSEL
L	Ballen-Fußhöhe / WIDTH FOOTPRINT
Øs	Durchmesser Stumpf / OUTSIDE DIAMETER SLUMP
Øm	Deckelendmesser / COVER PLATE DIAMETER

